

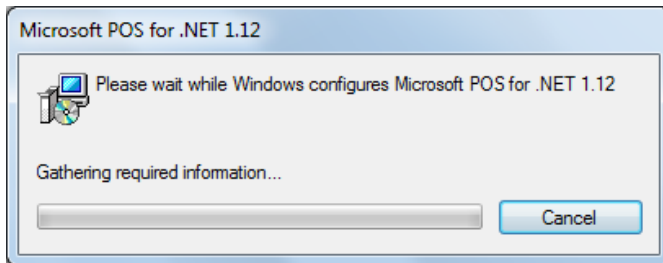
Epson Receipt Printer Install Instructions - .NET

Questions? From your BS&A program, go to **Help>Contact Customer Support** and select **Request Support Phone Call** or **Email Support**. Or, you may call us at (855) 272-7638 and ask for the appropriate support department. Questions for our I.T. department may be submitted by phone (same number), or by emailing tech@bsasoftware.com.

1. Insert the CD.
2. The CD runs and presents the BS&A Installation Menu. Click Microsoft OPOS.Net:

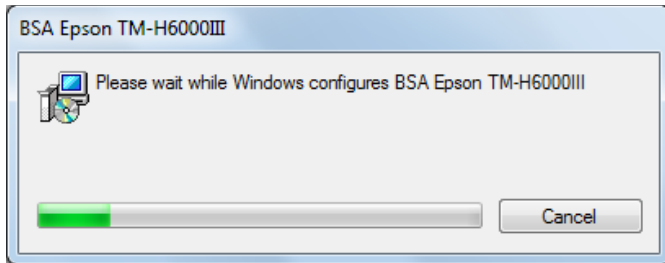
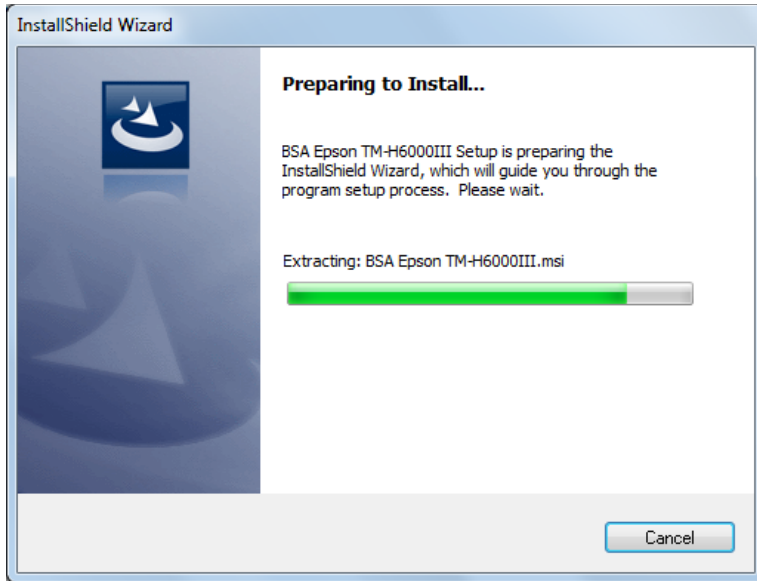


3. Your version of Internet Explorer affects the next screen; look for the Run button and click it.
4. The installation begins:

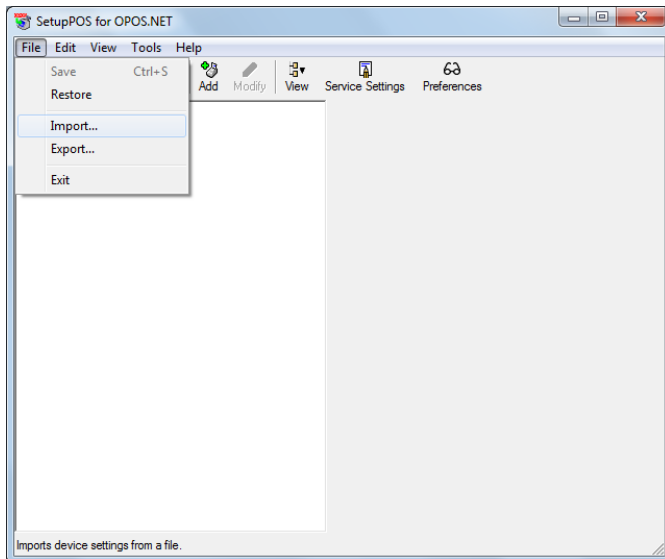


5. You return to the Installation Menu. Click Epson TM-h6000III OPOS .Net.
6. Again, look for the Run button and click it.

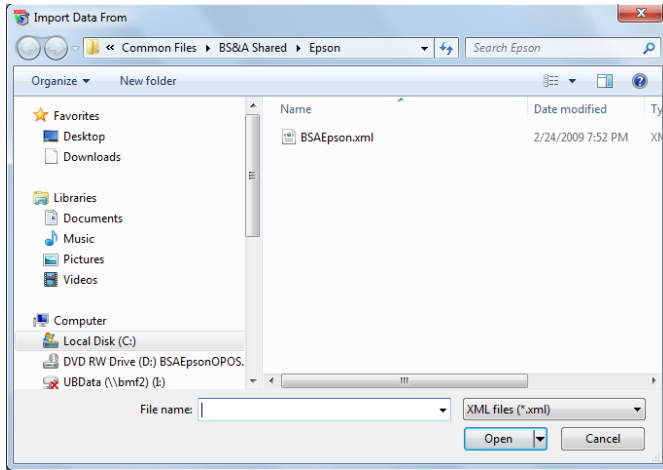
7. InstallShield begins extracting files and configuring the installation:



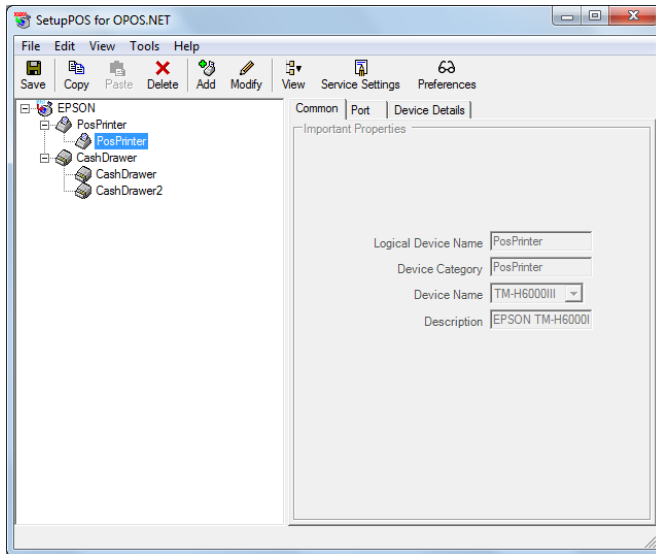
8. When the Setup dialog pops up, click File, then Import:



9. Double-click BSAEpson.xml:



10. Verify your screen resembles this picture:



11. Click File, then Exit, then Yes when prompted to save changes.